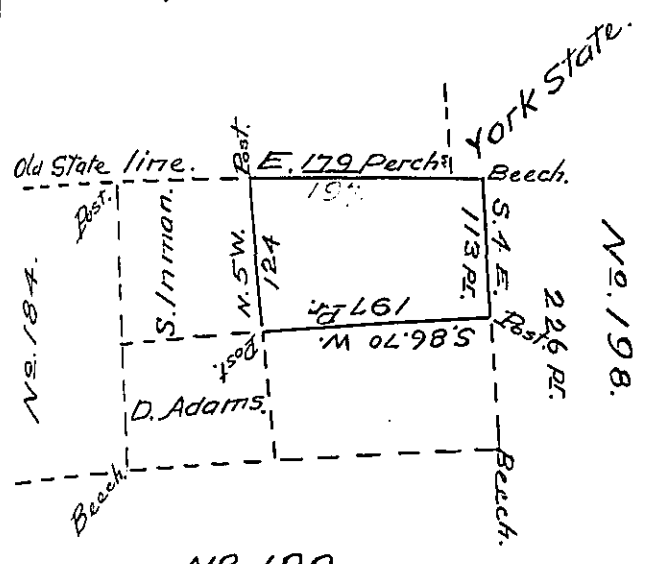


A draught of part of Donation Lot No 191 in the 10th Donation District Amity township Erie County on the Waters of French Creek Surveyed October 9th 1830 for Sylvester Inman by virtue of the actual settlement residence & improvement of Azel Gates containing 84 acres & 53 perches and allowance &c.

Wilson King  
D.S.

No. 190.



A draught of a part of Donation lot No 191 in the 10th Donation District Amity Township Erie County on the waters of French Creek, Surveyed October 9th 1830 for Azel Gates Jr. by virtue of the actual settlement residence & improvement of Azel Gates, containing 137 acres and 9 perches and allowance &c.

Wilson King  
D.S.

No. 190.

Erie County ss.

L.S.

I hereby certify that the foregoing plats are true copies of draughts of land made & entered in the Survey book of said County by Wilson King Esq. former Deputy Surveyor of Erie County and from the books & documents

in the Dep. Survyors office it does not appear that the above described pieces of Land are claimed by Warrant or otherwise by any one other than the said Sylvester Inman and Azel Gates Jr. respectively

Witness my hand & seal the 11th day of Nov. 1836

Stephen Skinner D.S.

IN TESTIMONY that the above is a copy of the original remaining on file in the Department of Internal Affairs of Pennsylvania, made conformably to an Act of Assembly approved the 16th day of February, 1833, I have hereunto set my Hand and caused the Seal of said Department to be affixed at Harrisburg, this twenty third day of June 1905.

Loach R. Brown  
Secretary of Internal Affairs.